

# TINLEY CREEK WETLANDS & BARTEL GRASSLAND – LESSONS LEARNED

## JOSEPH ROTH OPENLANDS



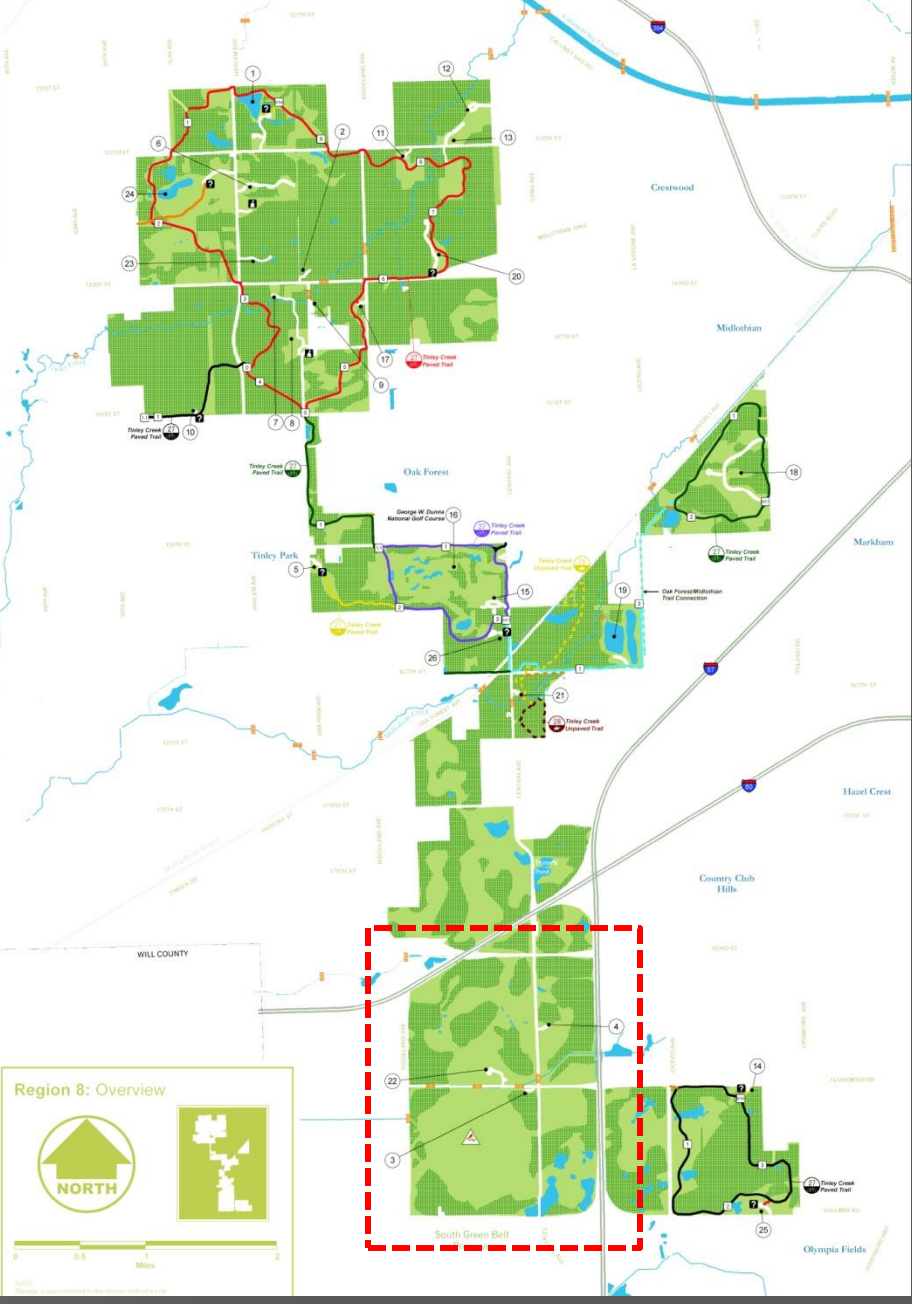
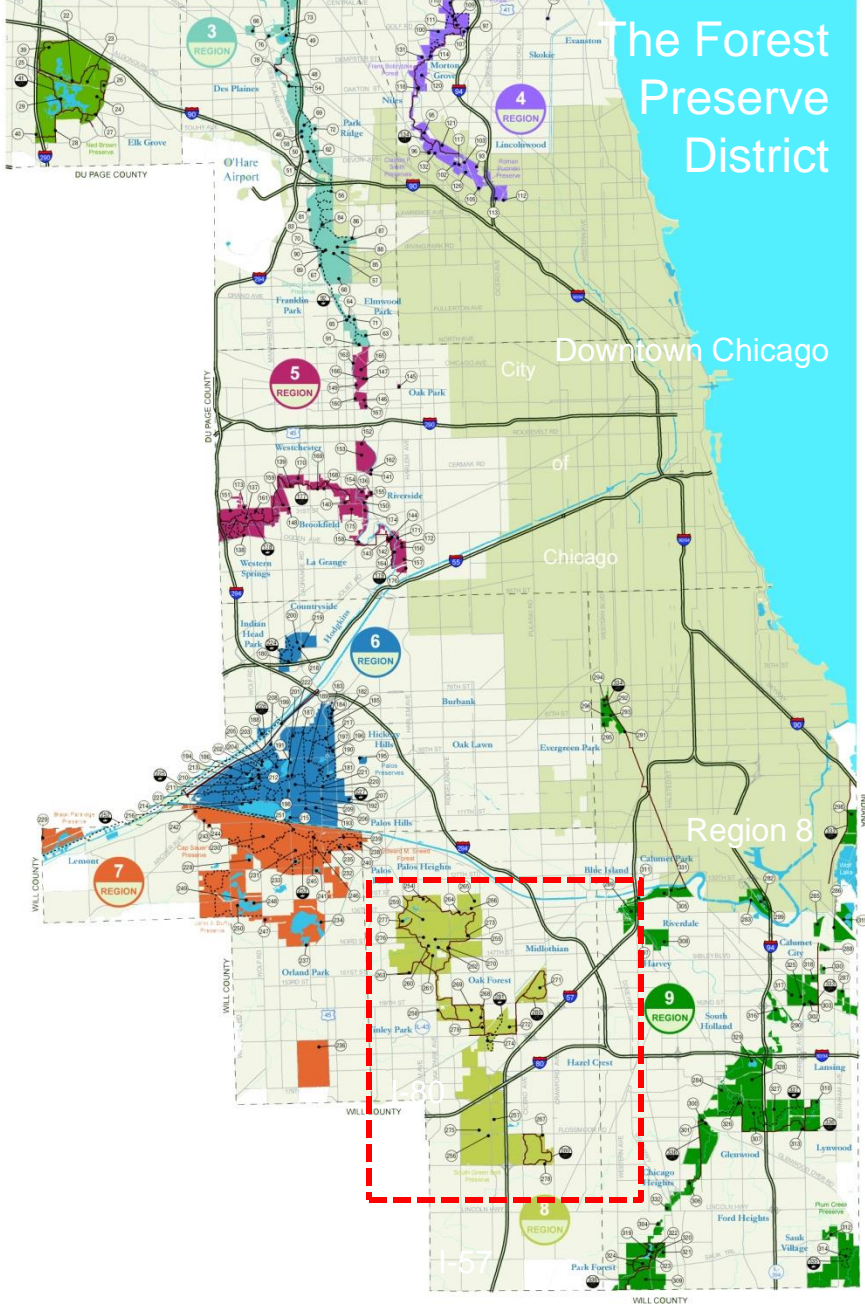
# Trust & the process of gaining trust

- ▣ Tinley Creek Wetlands & Bartel Grasslands encompass 2+ sections of land located in south Cook County, Illinois.
- ▣ Owned by the Forest Preserve District of Cook County (FPDCC)
- ▣ >900 acres of restoration in association with the Chicago District of the ACOE, FPDCC, INPC, and Audubon – Chicago Region

## Major Restoration Tasks Implemented (Tinley Creek Wetlands & Bartel)

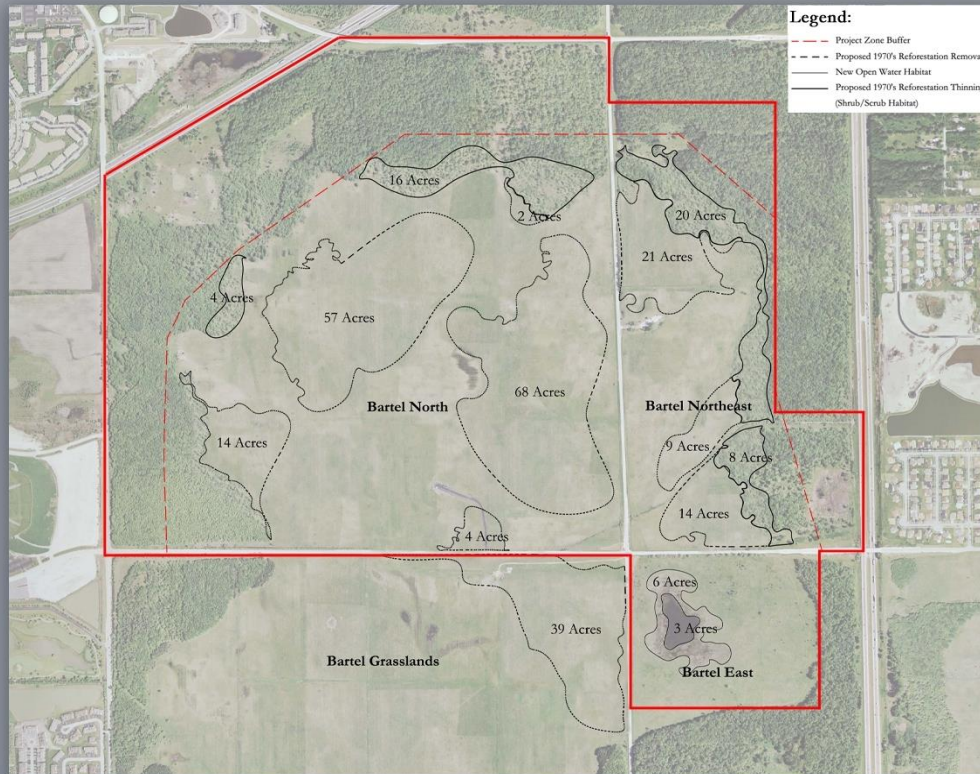
- Drainage tile identification & abandonment (in-line & gate valves, sectioning)
- Removal of reforestation areas and hedgerows (burn & chip)
- Control of non-native vegetation prior to native seeding/plugging (RCG)
- Seeding and plugging of native plant species (1 year post tile abandonment)
- Ongoing control of non-native plant species post native planting
- Controlled burning
- Plant community and hydrologic monitoring
- Communication and outreach to public and neighboring communities

# The Forest Preserve District









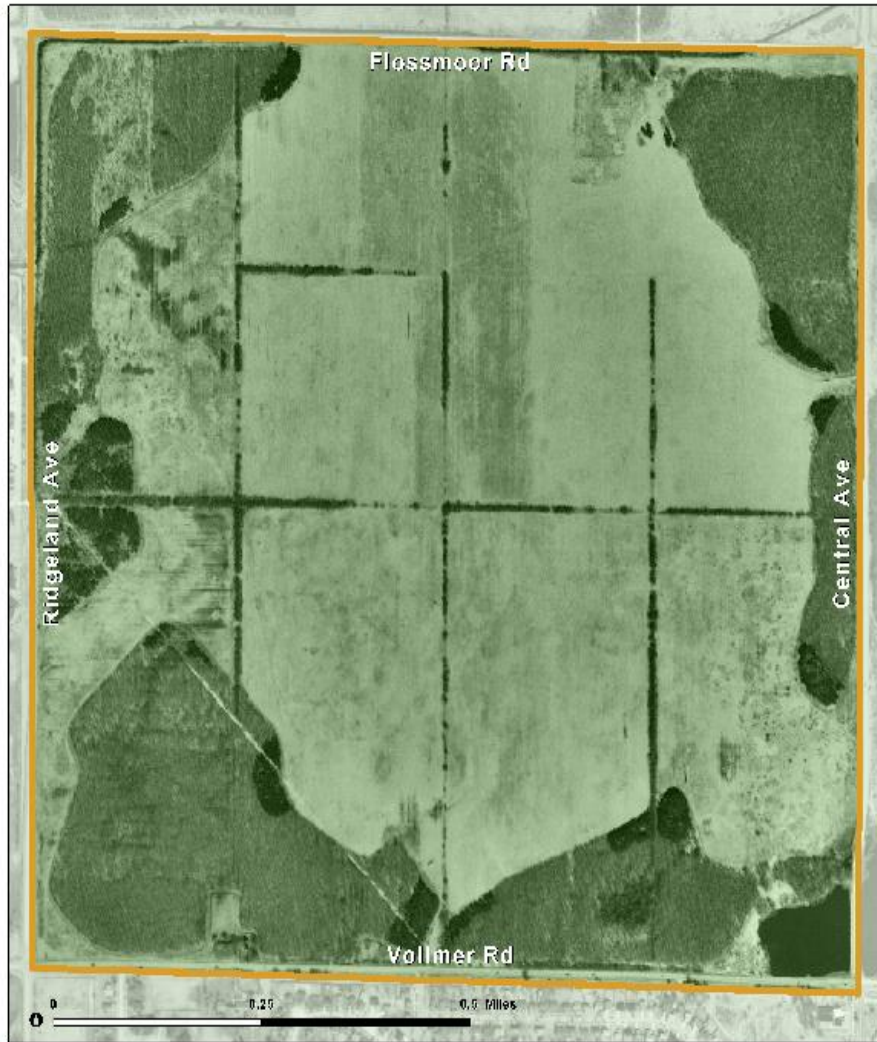
# Proposed Site Plan



December 6, 2007

Tinley Creek OMMA Project  
© 2007 Living Habitats

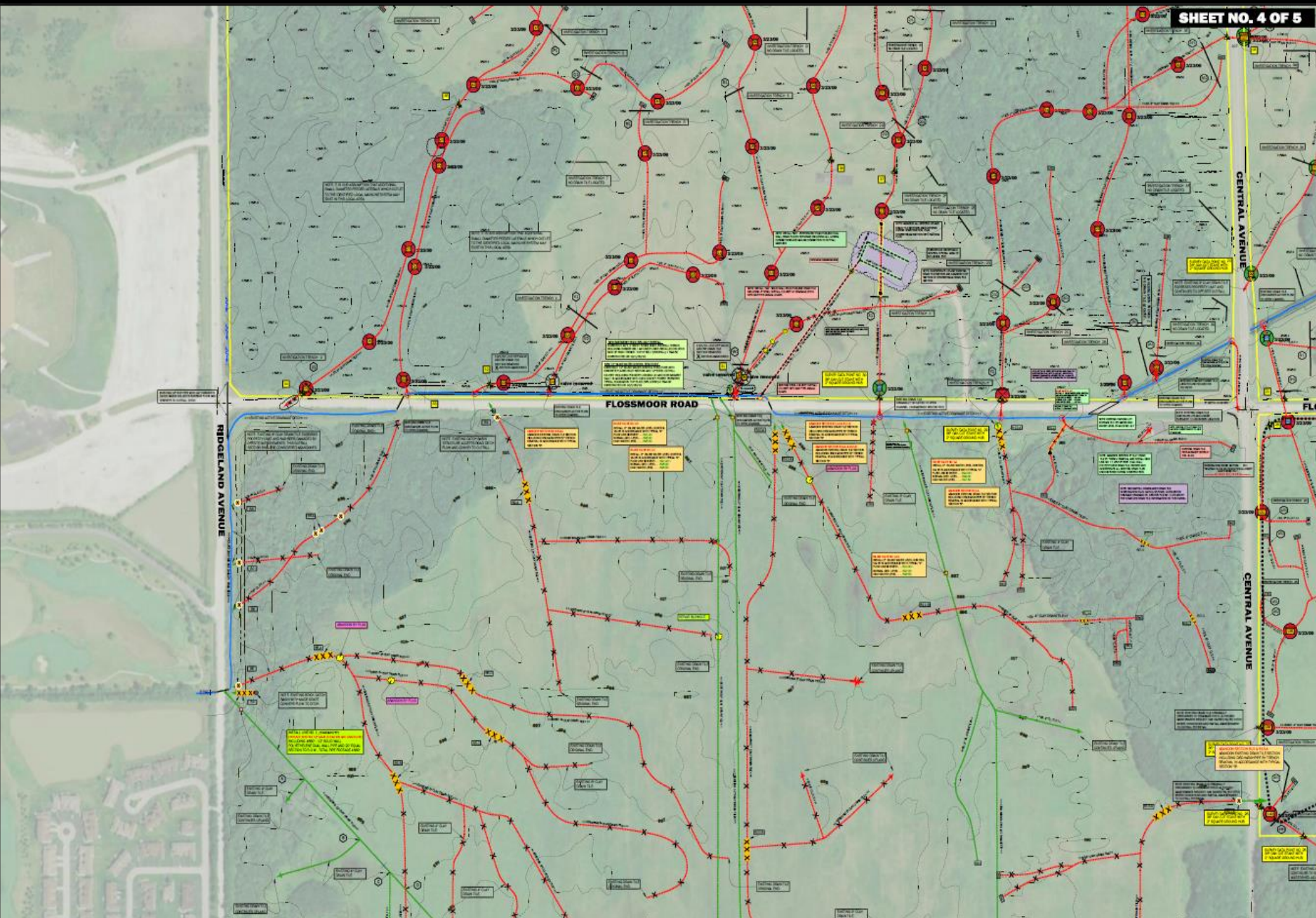
Bartel Grassland 1998



Bartel Grassland 2007







**openlands** FOREST PRESERVE DISTRICT  
of Cook County, Illinois

JOSEPH ROTH, OPENLANDS PROJECT MANAGER  
Suite 1650, 25 Washington Street, Chicago, IL 60603-4708

|   |                          |                     |   |
|---|--------------------------|---------------------|---|
| DESIGNED BY<br>TOM HUDDLESTON MCBRIDE 5/10/2007       | CHECKED BY<br>5/10/2007  | DATE<br>5/4/08 TLH  | ADD EXISTING DRAIN TILE BACKWATER STATIONS. |
| PROJECT<br>HUDDLESTON MCBRIDE DRAINAGE MAPPING SYSTEM | REVISION<br>11-00-007C   | DATE<br>3/27/09 TLH | DRAFT VALVE STATUS                          |
| DESIGNED BY<br>TOM HUDDLESTON MCBRIDE 5/10/2007       | CHECKED BY<br>11-00-007C | DATE<br>2/18/11 TLH | DRAFT 2010 CONSTRUCTION                     |
|   |                          | DATE<br>3/23/11 TLH | DRAFT 2010 CONSTRUCTION                     |
|   |                          | SCALE<br>1" = 20'   | HEET NO.<br>FOUR OF FIVE                    |

33

NORTH

**TINLEY CREEK RESTORATION AREA**

**HUDDLESTON MCBRIDE**  
PROFESSIONAL LAND DRAINAGE SERVICES

8801 POWELL RD., ROCKFORD, ILLINOIS PHONE 815-392-2007

# Lessons Learned

- ▣ Watershed Position Important – headwaters of Hickory Creek
- ▣ Comprehensive understanding of existing conditions on and off project site (especially hydrology) critical
- ▣ Pre-settlement vegetation mapping and historic aeriels help establish and support restoration goals

# Lessons Learned

- ▣ Communicate restoration process and goals to public and adjacent communities in relation to organization mission and purpose
- ▣ Meetings with village/city staffs important
- ▣ Public open houses – tell a story (who is involved, organization purpose, pre-settlement, historic aerials, existing conditions, proposed conditions, why)

# Lessons Learned

- ▣ Who do people contact for questions and concerns – always answer the question first
- ▣ Continue to communicate project status and progress through volunteers, news releases, tours, signage, etc.
- ▣ Ultimate goal is build public trust in purpose, process, knowledge, and professionalism

# Appreciate your partners!

- ▣ Forest Preserve District of Cook County
- ▣ Chicago District – ACOE
- ▣ Chicago Metro office – USFWS
- ▣ USEPA – Region 5
- ▣ Audubon – Chicago Region
- ▣ Bartel Grassland Volunteers
- ▣ Illinois Nature Preserves Commission

# Tinley Creek Wetlands & Bartel Grassland

Questions??